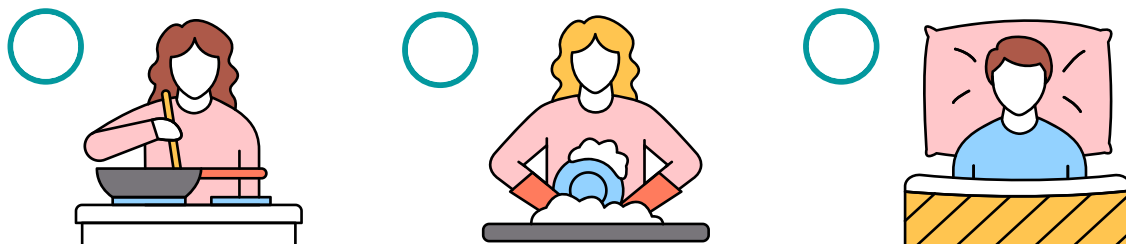
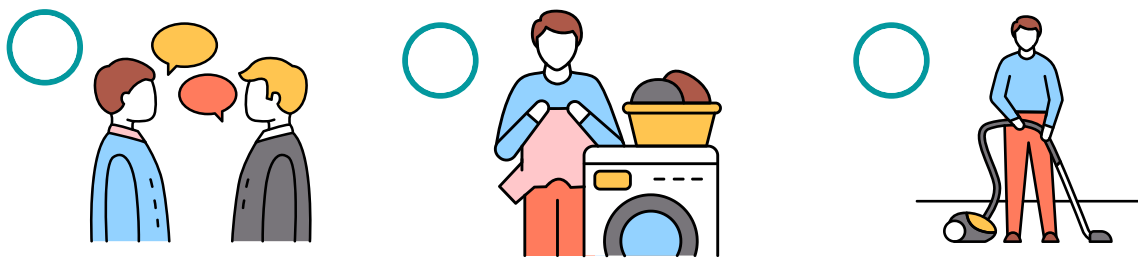
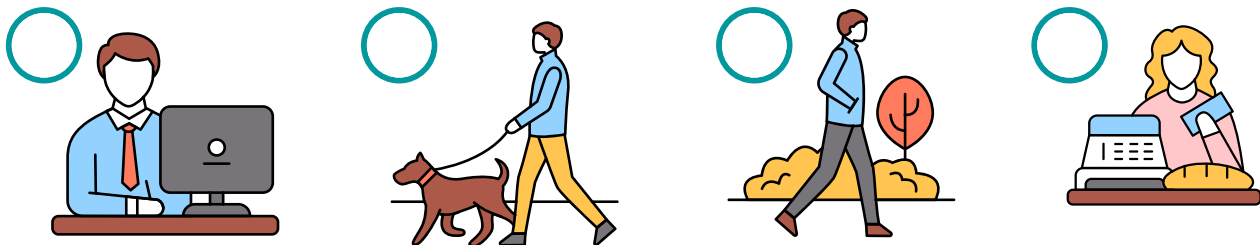
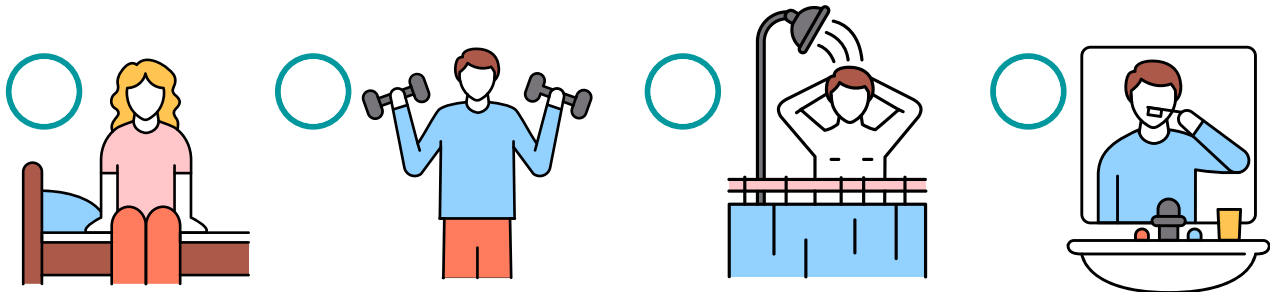


1 Match the pictures to the expressions used to describe daily routines on the following page. Write the letters.



- a **Hataraki masu**
- b **souji shi masu**
- c **ne masu**
- d **kai masu**
- e **o kimasu**
- f **osara o araimasu**
- g **kigae masu**
- h **aruki masu**
- i **undo shi masu**
- j **hanashi masu**
- k **ha o migaki masu**
- l **kuruma ni norimasu**
- m **inu no sanpo si masu**
- n **sentaku shimasu**
- o **shawaa o abimasu**
- p **asagohan o tabemasu**
- q **ryouri shimasu**

2 What's your routine like? What other activities do you do daily? Add them to the list.
